

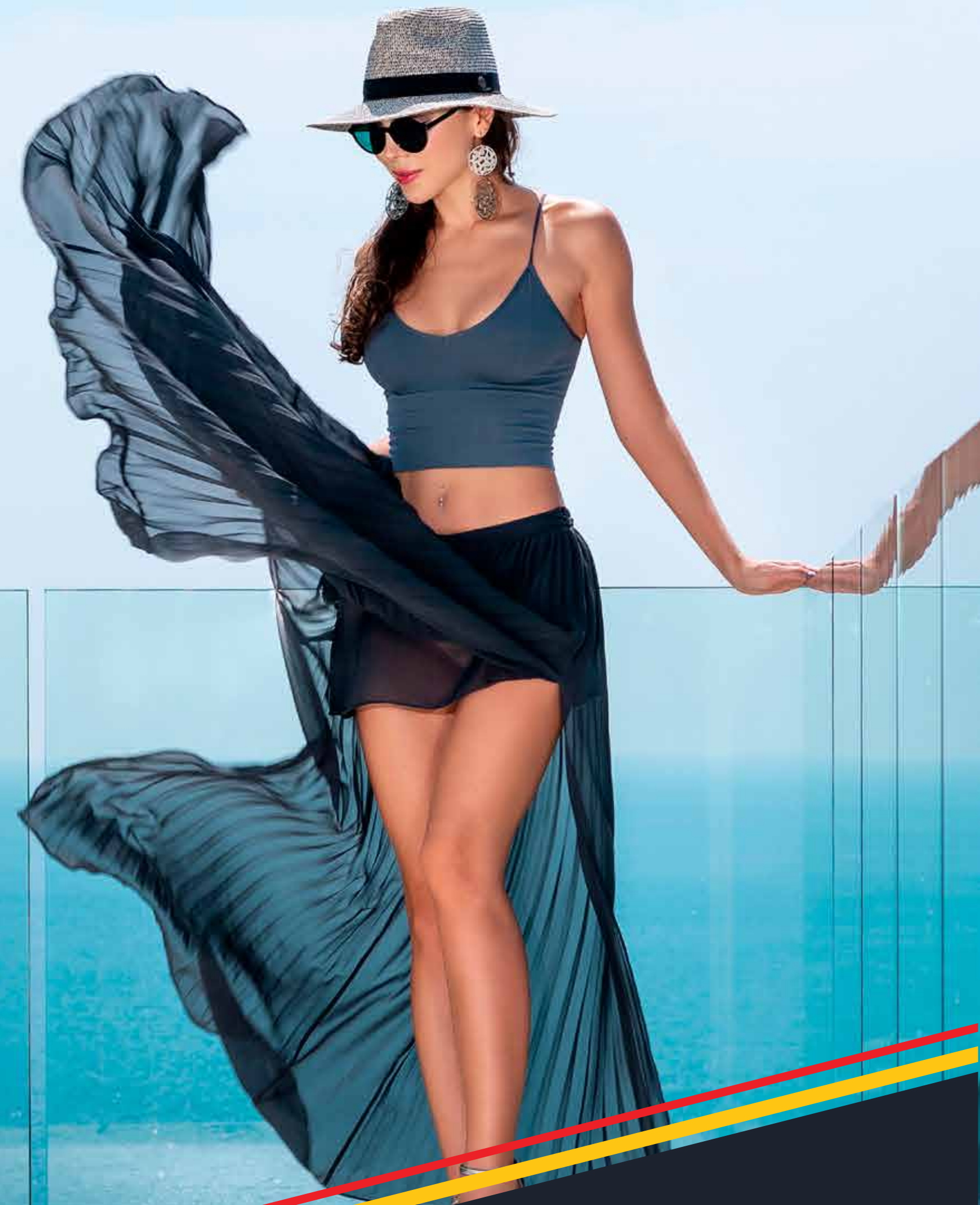


THE MASTERPIECE
COLLECTION

PENTHOUSE SUITES

Unlike Any Other.

INTRODUCING AN ULTRA-RARE COLLECTION OF LUXURY, MASTERPIECE PENTHOUSES IN DOWNTOWN BURLINGTON FEATURING A QUIET, WALKABLE LIFESTYLE, SPECTACULAR VIEWS AND THE LARGEST SQUARE FOOTAGES IN THE AREA.





Unrivalled Exclusivity & Space.

4 Penthouses on the 19th floor
4 Penthouses on the 20th floor
3 Upper Penthouses on 21st floor
3 Upper Penthouses on the 22nd floor

AWARD-WINNING
TOMAS PEARCE INTERIORS
FROM 1,416 TO 2,467 SQ. FT.
2B+D AND 3B+D RESIDENCES
EXPANSIVE OUTDOOR
LIVING SPACES



Unmistakable Views

LAKE VIEWS & BRANT STREET
PIER TO THE SOUTH

LAKE VIEWS & SKYWAY
BRIDGE TO THE WEST

LAKE VIEWS & TORONTO
SKYLINE TO THE EAST

BURLINGTON & GREEN SPACE
TO THE NORTH

South Views

LAKE VIEWS & BRANT STREET
PIER TO THE SOUTH



SOUTH

SOUTH EAST



EAST

North Views

BURLINGTON & GREEN SPACE
TO THE NORTH



NORTH EAST

NORTH

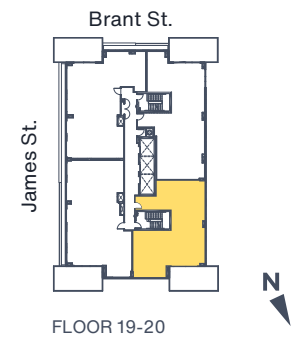
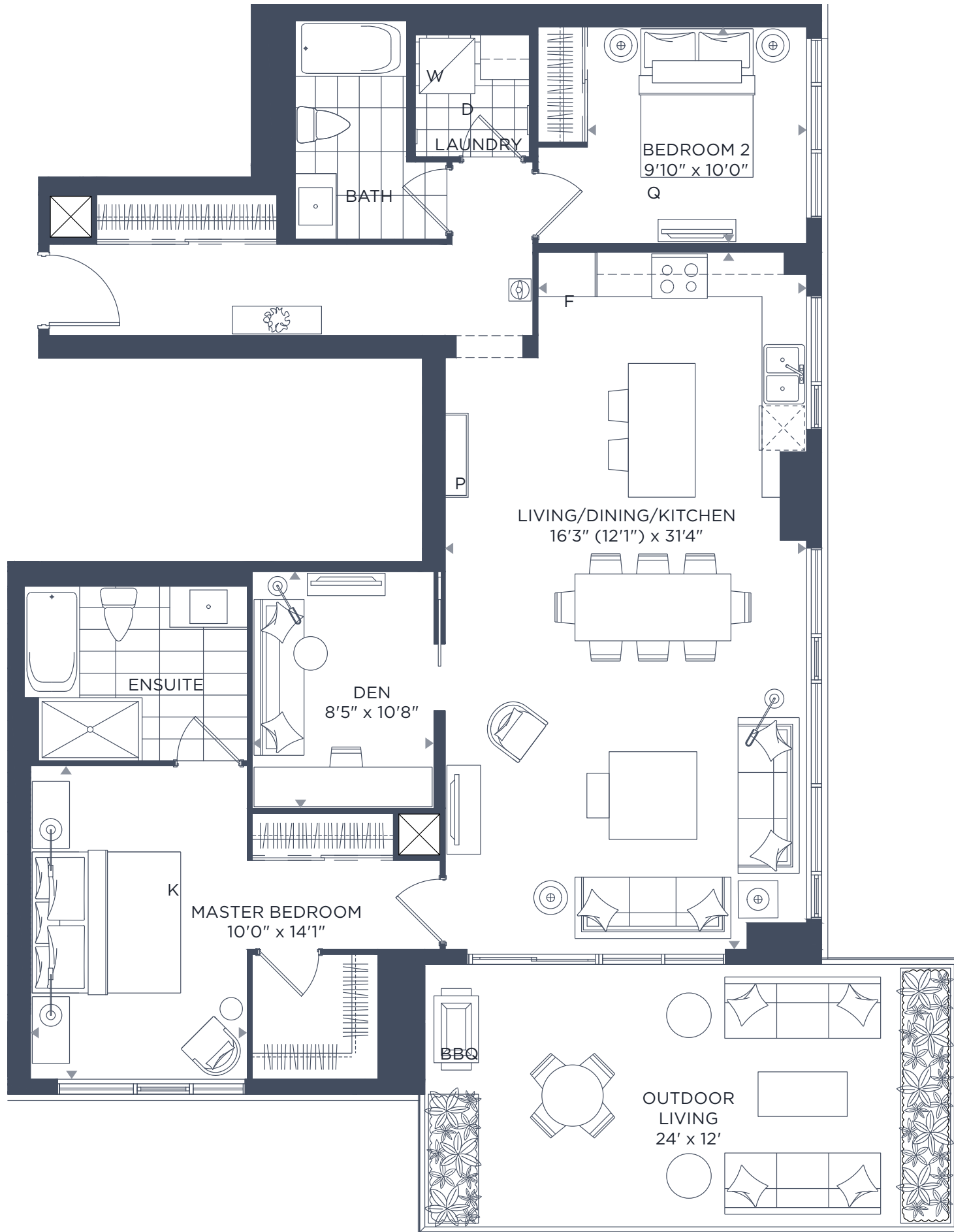


NORTH WEST

PENTHOUSE
Van Gogh

SUITES 1901 & 2001

1416 SQ. FT.
2 BEDROOM + DEN + 2 BATH

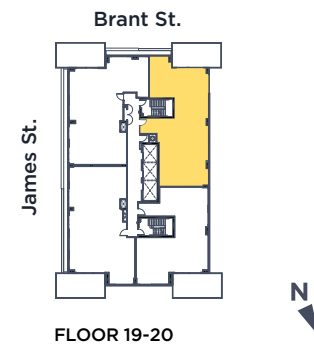
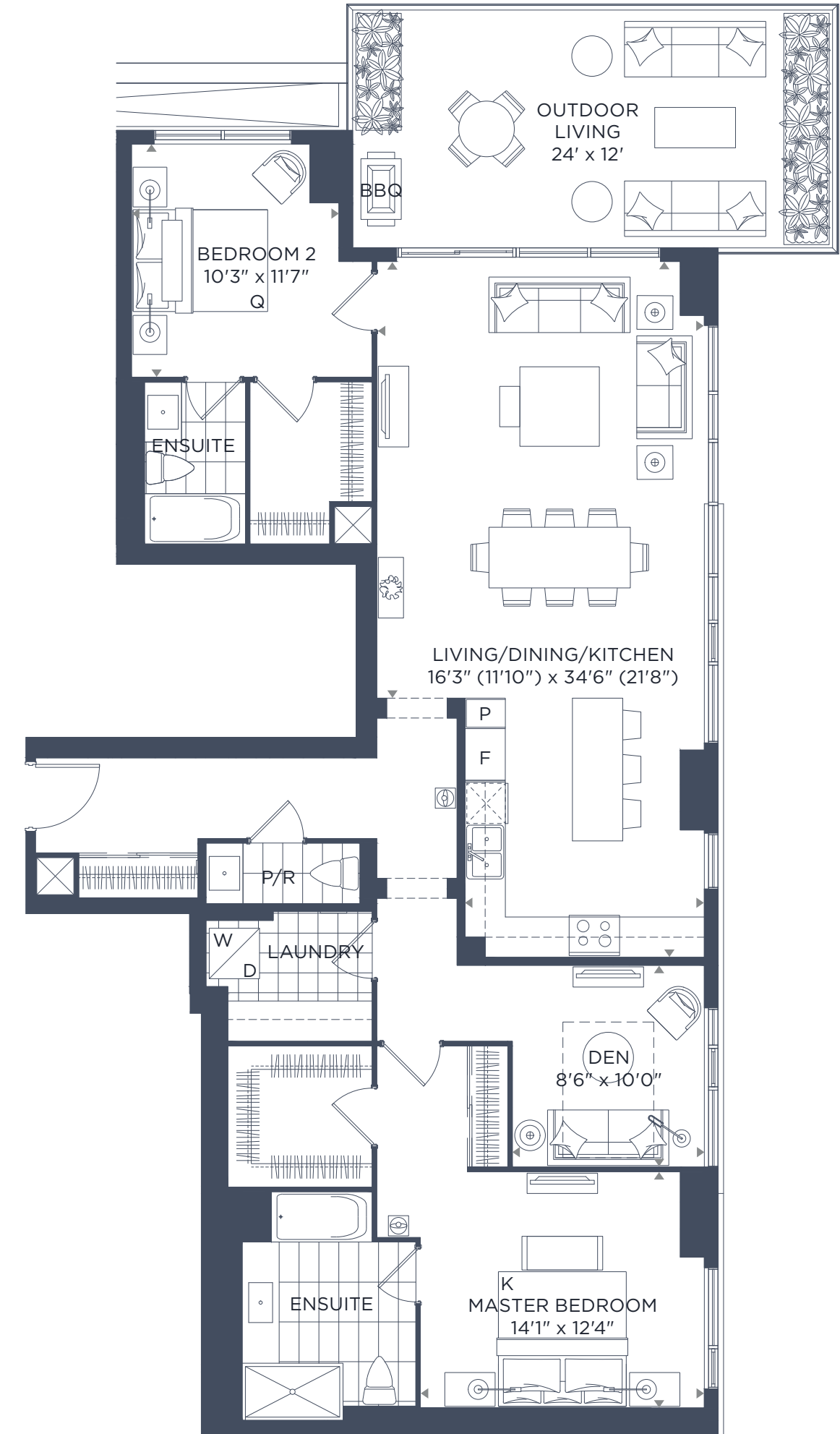


All dimensions are approximate and subject to normal construction variances. Dimensions may exceed the useable floor area. Sizes and specifications subject to change without notice. Furniture is displayed for illustration purposes only and does not necessarily reflect the electrical plan for the suite. Suites are sold unfurnished. E. & O. E.

PENTHOUSE
Da Vinci

SUITES 1904 & 2004

1635 SQ. FT.
2 BEDROOM + DEN + 2.5 BATH



All dimensions are approximate and subject to normal construction variances. Dimensions may exceed the useable floor area. Sizes and specifications subject to change without notice. Furniture is displayed for illustration purposes only and does not necessarily reflect the electrical plan for the suite. Suites are sold unfurnished. E. & O. E.

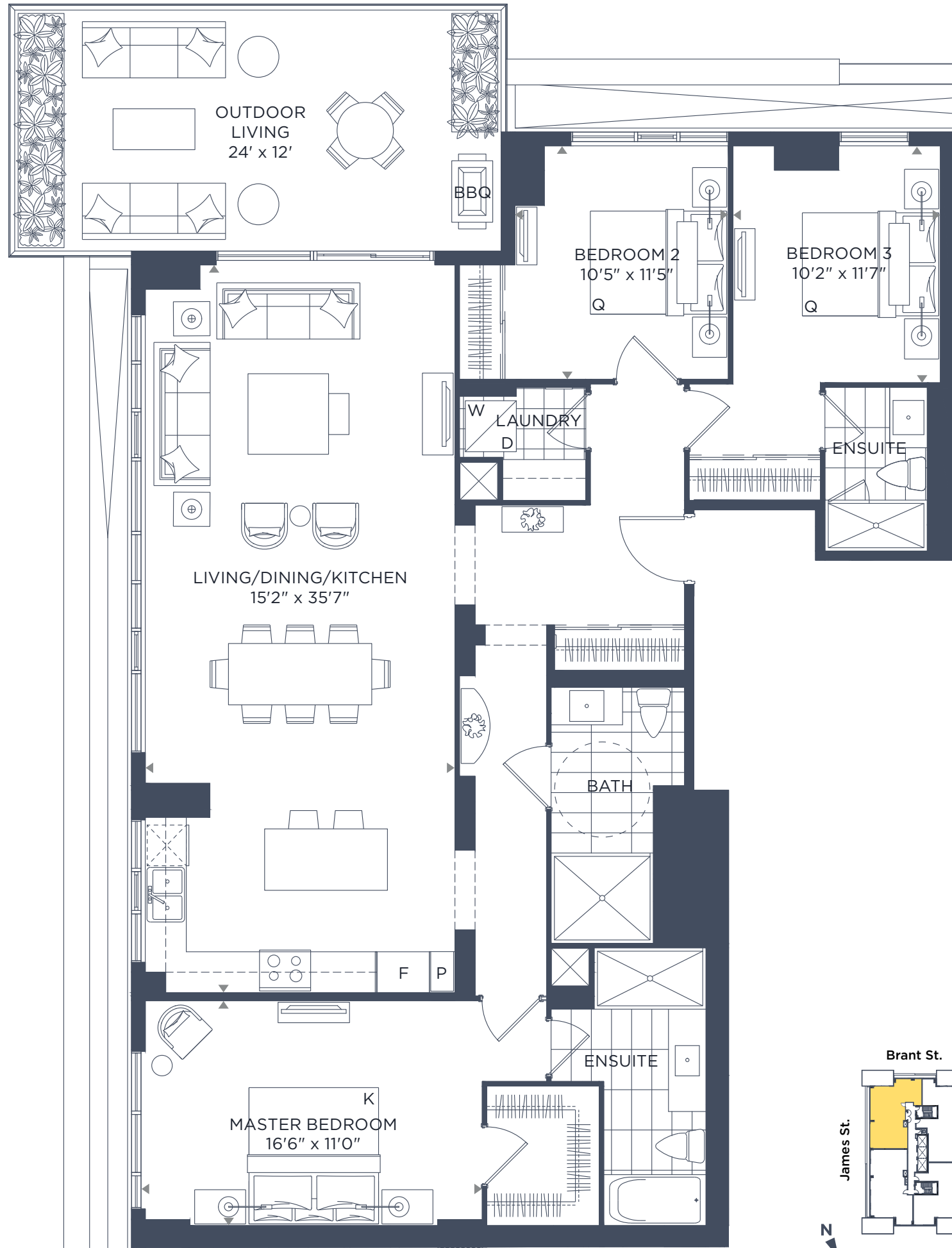
PENTHOUSE

Dali

SUITES 1903 & 2003

1649 SQ. FT.

3 BEDROOM + 3 BATH



All dimensions are approximate and subject to normal construction variances. Dimensions may exceed the useable floor area. Sizes and specifications subject to change without notice. Furniture is displayed for illustration purposes only and does not necessarily reflect the electrical plan for the suite. Suites are sold unfurnished. E. & O. E.

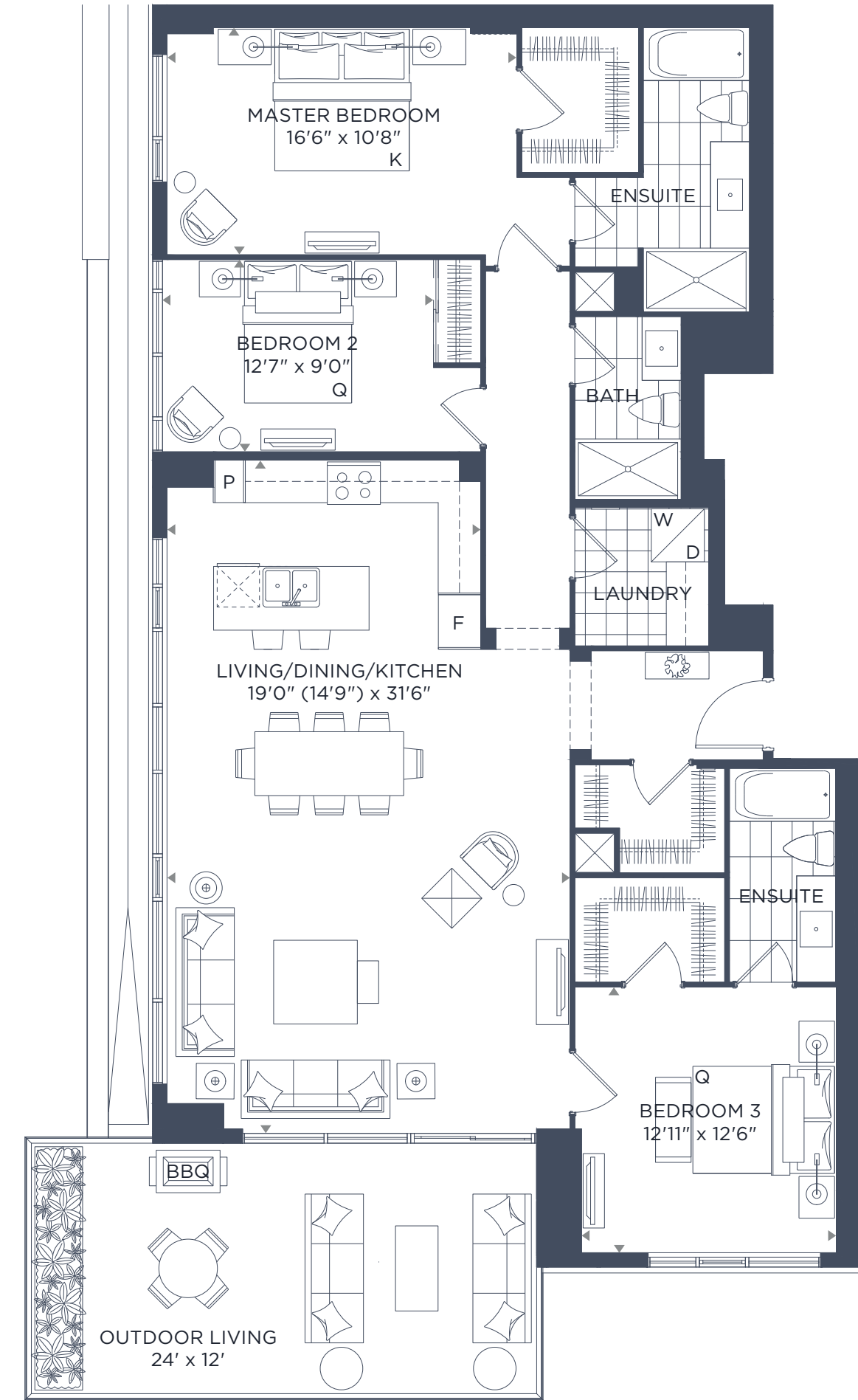
PENTHOUSE

Renoir

SUITES 1902 & 2002

1681 SQ. FT.

3 BEDROOM + 3 BATH



All dimensions are approximate and subject to normal construction variances. Dimensions may exceed the useable floor area. Sizes and specifications subject to change without notice. Furniture is displayed for illustration purposes only and does not necessarily reflect the electrical plan for the suite. Suites are sold unfurnished. E. & O. E.



PENTHOUSE
Picasso
 SUITES 2102 & 2202

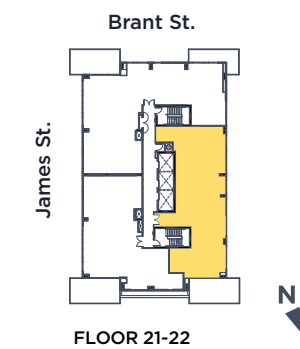
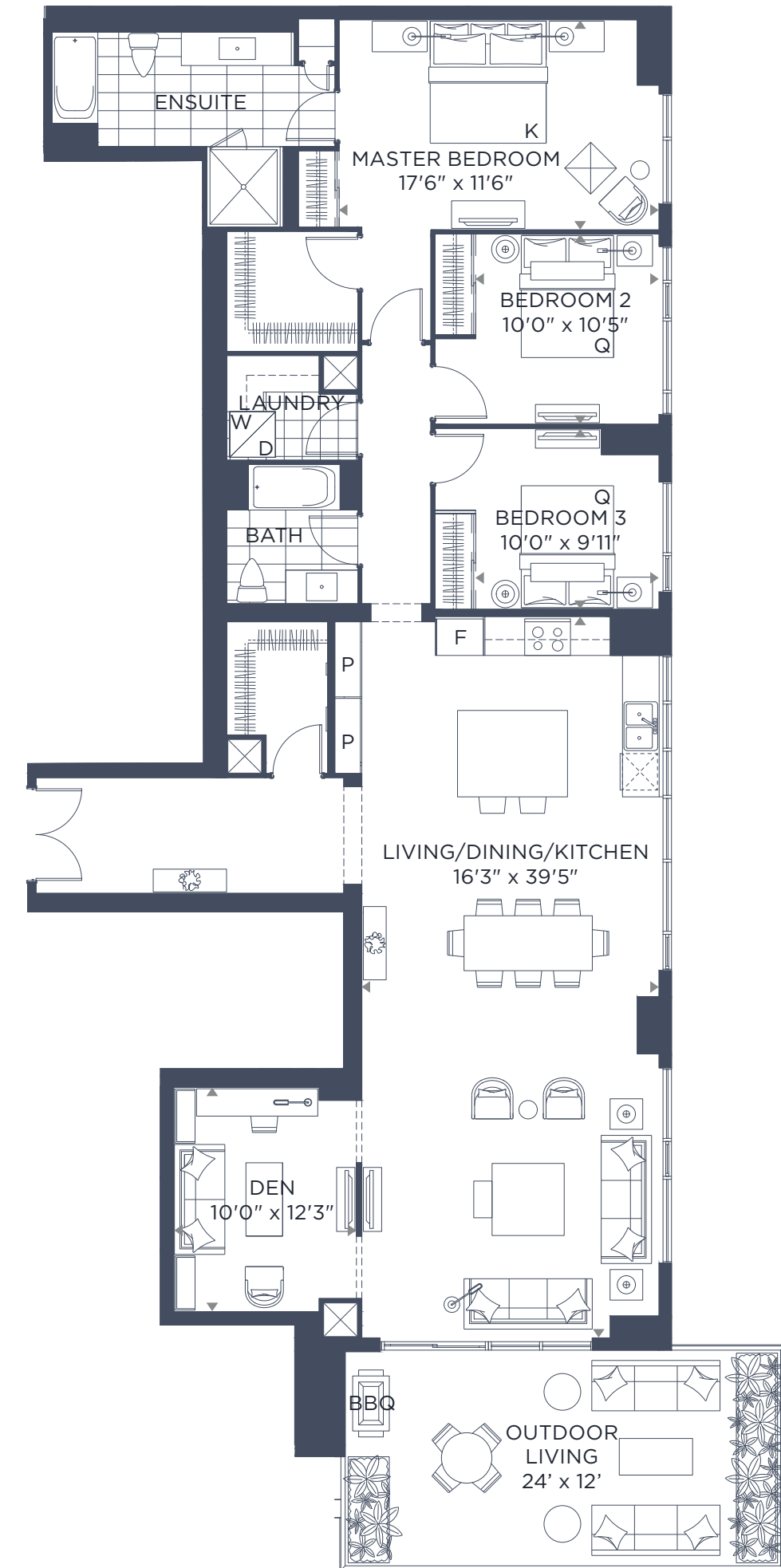
1826 SQ. FT.
 3 BEDROOM + 3 BATH



All dimensions are approximate and subject to normal construction variances. Dimensions may exceed the useable floor area. Sizes and specifications subject to change without notice. Furniture is displayed for illustration purposes only and does not necessarily reflect the electrical plan for the suite. Suites are sold unfurnished. E. & O. E.

PENTHOUSE
Monet
 SUITES 2101 & 2201

1986 SQ. FT.
 3 BEDROOM + DEN + 2 BATH



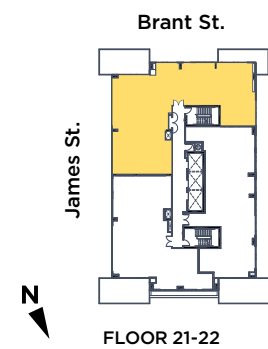
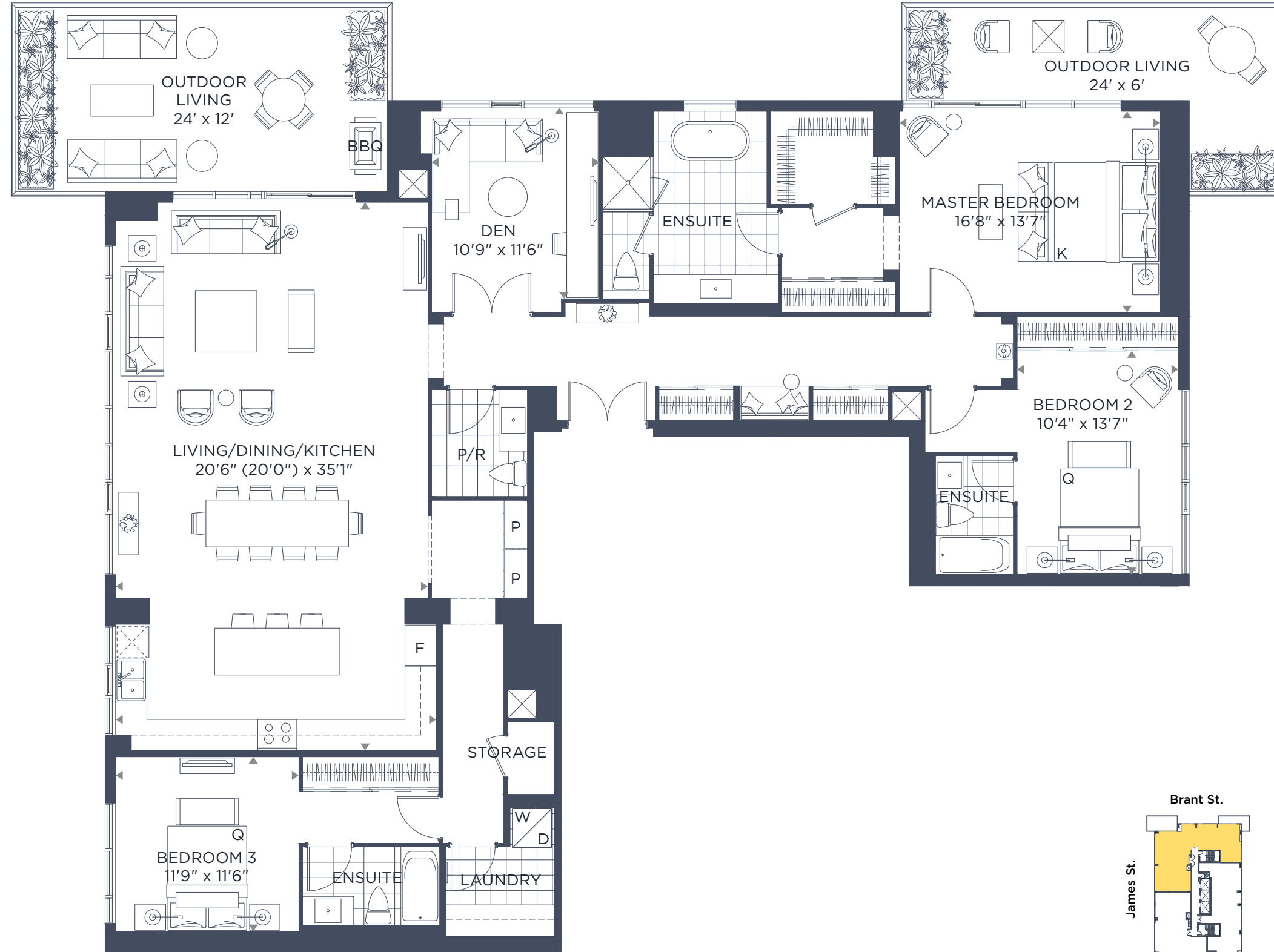
All dimensions are approximate and subject to normal construction variances. Dimensions may exceed the useable floor area. Sizes and specifications subject to change without notice. Furniture is displayed for illustration purposes only and does not necessarily reflect the electrical plan for the suite. Suites are sold unfurnished. E. & O. E.

PENTHOUSE

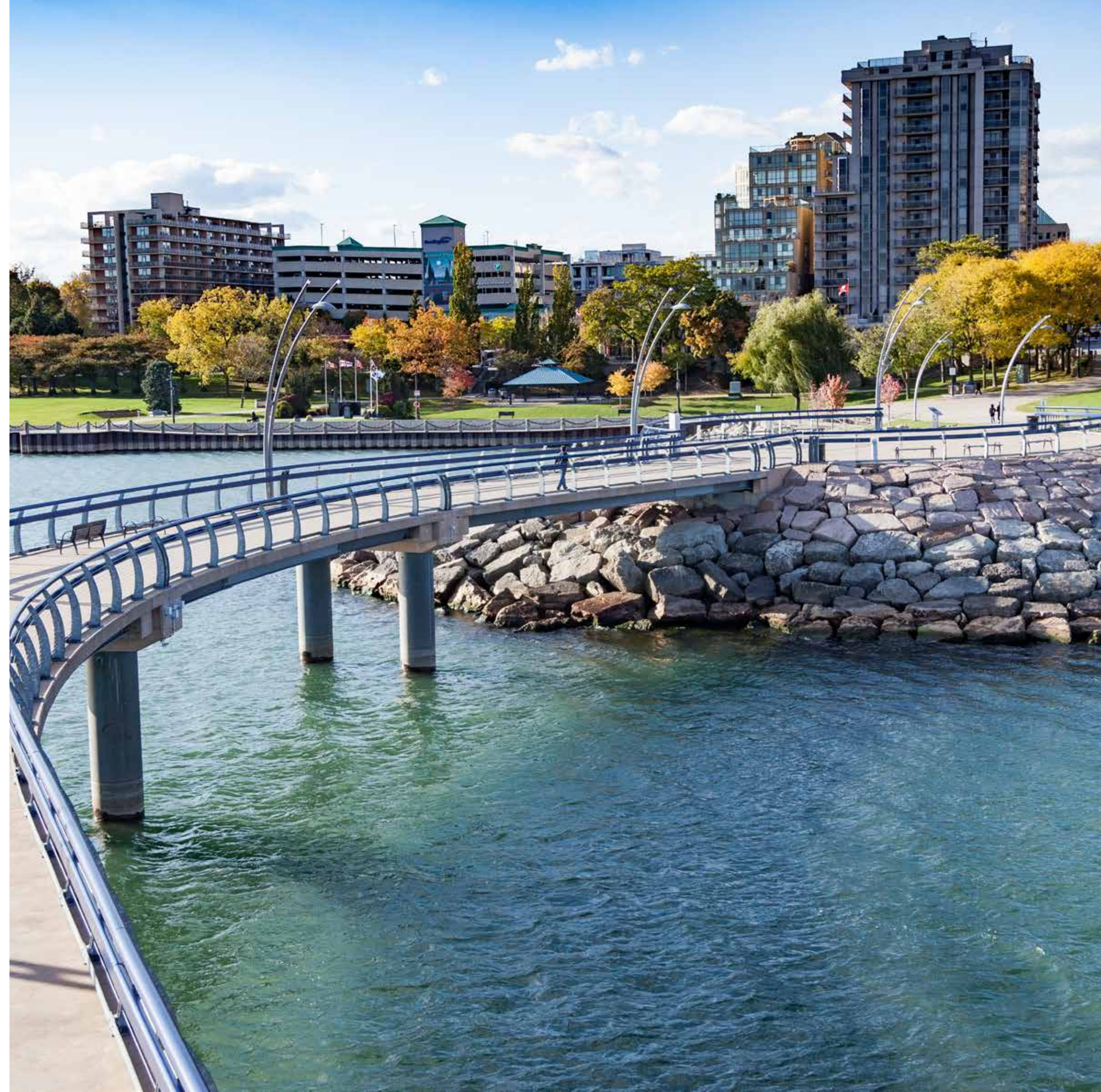
Rembrandt

2467 SQ. FT.
3 BEDROOM + DEN + 3.5 BATH

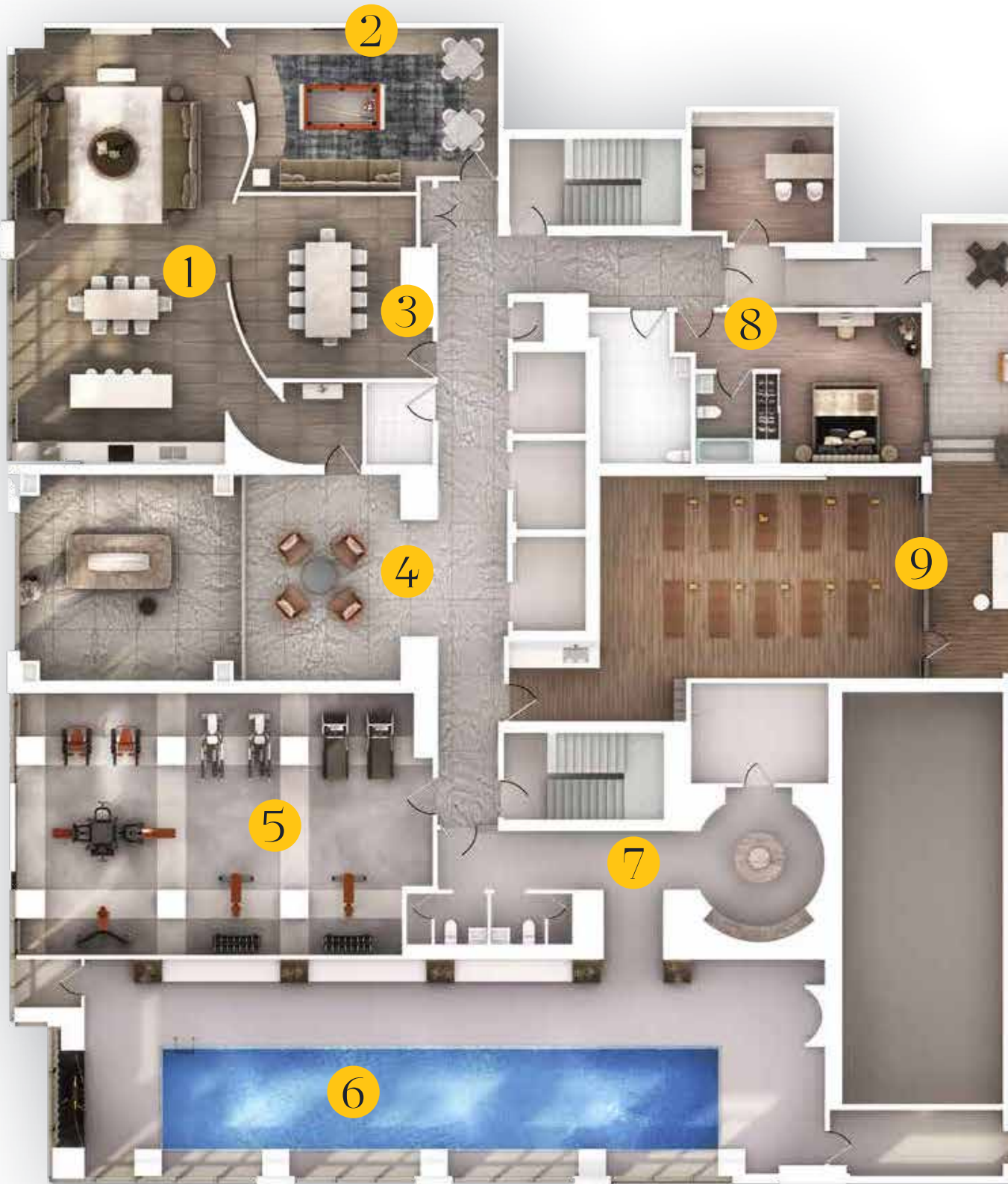
SUITES 2103 & 2203



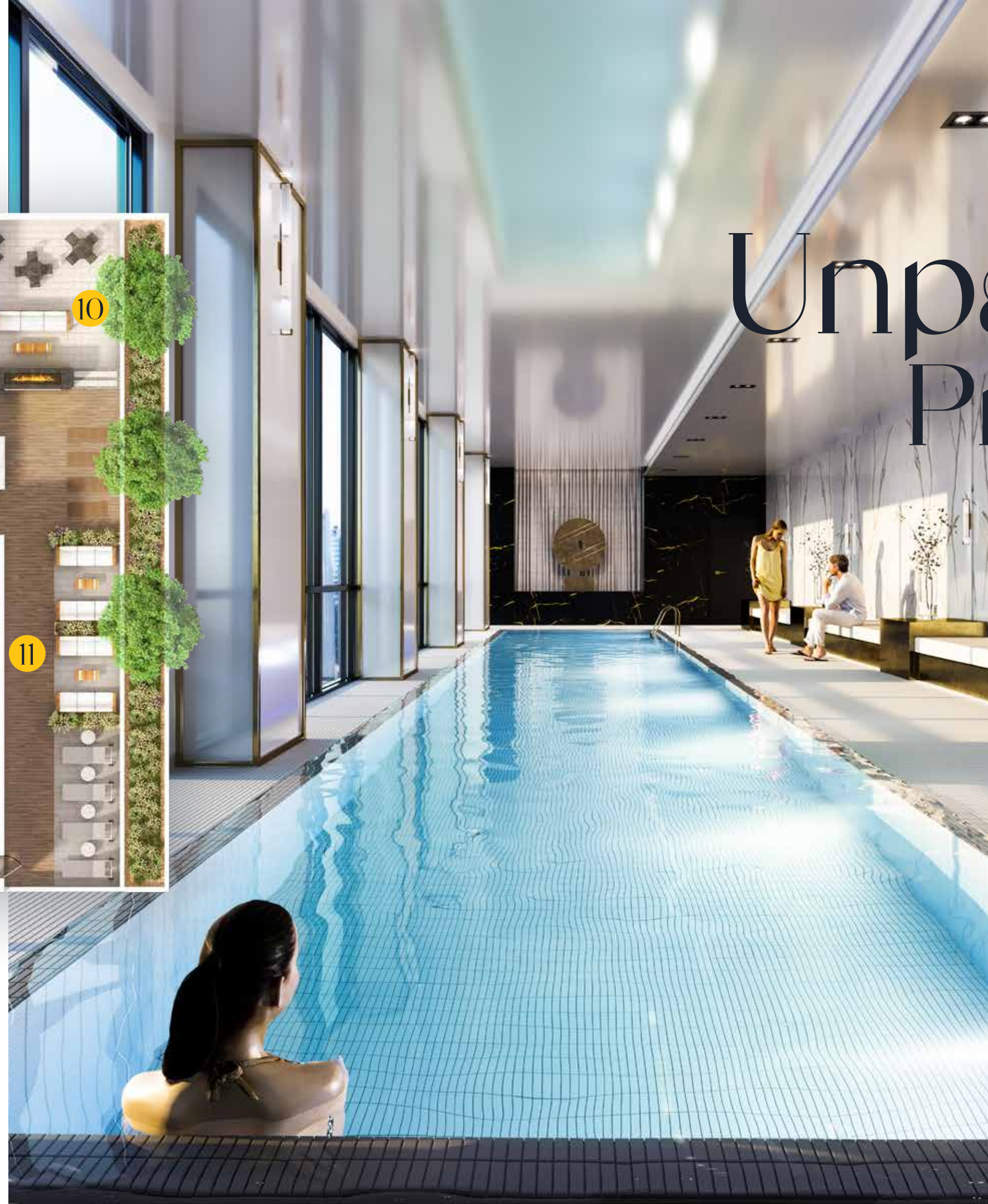
All dimensions are approximate and subject to normal construction variances. Dimensions may exceed the useable floor area. Sizes and specifications subject to change without notice. Furniture is displayed for illustration purposes only and does not necessarily reflect the electrical plan for the suite. Suites are sold unfurnished. E. & O. E.







- | | | |
|-------------------|--------------------------------------|---------------------------------------|
| 1. PARTY ROOM | 6. INDOOR POOL | 10. OUTDOOR TERRACE WITH FIRE FEATURE |
| 2. GAMES ROOM | 7. BOUTIQUE PRIVATE BATH/CHANGE AREA | 11. BOUTIQUE PRIVATE BATH/CHANGE AREA |
| 3. PRIVATE DINING | 8. GUEST SUITE | 12. OUTDOOR SUN LOUNGE |
| 4. LOFT LOUNGE | 9. YOGA STUDIO INDOOR/OUTDOOR | |
| 5. FITNESS STUDIO | | |



Unparalleled Privileges.

- 24-hour concierge
- Rooftop fireplace terrace w/ BBQ
- Private dining room
- Fitness & yoga studios
- Indoor pool w/ boutique baths
- Outdoor cabana sun lounge
- Overnight guest suite

Uncompromising Luxury.

- Soaring 10' ceiling heights
- Contemporary, European kitchens
- Premium appliances w/ gas range
- Quartz counters & backsplashes
- Heated floors in master ensuites



Artists' concept. E. & O.E.

Features & Finishes.

Building Features

- Set in the heart of downtown Burlington, the elegant architectural design of the 22-storey building features a four-storey, brick and cast stone podium which anchors the contemporary glass tower.
- Enhanced streetscape designed to capture the vitality and excitement of downtown Burlington, featuring proposed outdoor patio seating and lushly landscaped corner designed to interact with City Hall's Civic Square.
- Dramatic two-storey lobby designed by Tomas Pearce, featuring lounge seating, fireplace and original artwork.
- 24-hour concierge.
- Intelligently designed parcel storage area.
- Over 14,000 square feet of indoor and outdoor amenity spaces.
- Tranquil indoor swimming pool with private boutique baths that open onto an outdoor landscaped deck with cabanas and lounge area.
- Dedicated pet wash on the ground level.
- Resort-style health and fitness centre features professionally equipped exercise room with weight training and cardio areas.
- Yoga Zen Studio opens onto an outdoor terrace with stretch area, lounge seating and fire feature.
- Well appointed guest suite for use by visiting family and friends.
- Outdoor rooftop landscaped oasis features breathtaking views of downtown Burlington and Lake Ontario, complete with BBQ stations, intimate dining areas, and lounge seating with a fire feature.
- Stylish party room complete with hotel-style bar lounge, private dining area, and fireplace.
- Adjoining games room equipped with billiard table, seating area and TV.
- Tri-sorter waste management and recycling system with convenient garbage chute access on each floor.
- Secure indoor bike storage area.
- 3 high speed elevators.
- Convenient car share program.

Suite Features

- Private outdoor balconies or terraces, as per plan.
- Stylish white interior doors with contemporary flat mould-style baseboard and casing.
- Contemporary lever-style hardware on interior doors.
- Smooth painted ceilings throughout.
- Secure solid core entry suite door with deadbolt and unique guest viewer featuring surround vision.
- Designer series, wide plank, laminate flooring in living room, dining room, kitchen, foyer, bedrooms, hallways, and den.
- Porcelain floor tile in laundry room.
- Space saving vinyl coated wire closet shelving.
- Walk-in closets, as per plan.
- Stacked Energy Star® electric front load washer and dryer.
- Expansive energy-efficient windows and sliding doors to balcony with noise reduction technology as per plan.
- Interior walls painted in designer white latex.
- Individually controlled 4 pipe fan coil system providing in suite heating and cooling all year.
- Separately metered suites for individual control of hydro and water consumption.

Kitchen Features

- Custom designed European-style kitchen cabinetry, including extended height uppers, built-out fridge cabinet and soft-close doors and drawers.
- Sleek polished quartz countertop with undermount stainless steel sink and designer pull-out faucet.
- Modern porcelain tile backsplash.
- Upgraded Energy Star® rated stainless steel appliance package.

Bathrooms

- Custom designed contemporary vanity.
- Quartz countertop with undermount sink and unique single lever faucet.
- Full width vanity mirror including light fixture above.
- Deep soaker tub as per plan.
- Pressure balanced valves for tub and shower.
- Modern 12" x 24" imported porcelain tile flooring in all bathrooms.
- Separate shower stall with tempered glass enclosure and tiled walls, as per plan.
- Privacy locks on all bathroom doors.
- Ceiling exhaust fans in all bathrooms.

Electrical & Communications

- Individual electrical service panel with circuit breaker and copper wiring throughout.
- Ceiling mounted light fixtures in foyer, hallways, kitchen, bedrooms, dining room and den as per plan.
- Conveniently located phone TV and data cable wired in all suites.
- White Decora-style switches and receptacles throughout.
- Switched controlled split outlet in living room.
- All enclosed showers to include a waterproof pot light.

Building Security & Safety

- All main entrances, exits, and elevators feature cameras with closed circuit television system monitored by concierge.
- Heat, smoke and carbon monoxide detectors connected to a building alarm.
- Key fob allows effortless access throughout all common areas.
- Main garage door operated by key fob transmitter.
- Private below grade parking with security cameras along with parabolic mirrors for greater visibility of pedestrians and vehicles.
- Personal remote transmitter for parking garage door access.
- Garage is ventilated and protected by fire sprinkler system for added safety and protection.
- In suite sprinkler system.

Premium Features

In addition to the Gallery standard features and finishes, the Masterpiece collection suites include the following appointments;

- Expansive private balconies or terraces as per plan with water tap and gas hook up for BBQ with a minimum size of 275 square feet per plan
- Penthouse suites to feature soaring 10'ft. ceilings as per plan (ceiling height may be lower in some areas)
- Designer series, 7" inch wide plank laminate flooring in living room, dining room, kitchen, foyer, bedrooms, hallways and den
- Impressive 8' doors throughout with upgraded hardware as per plan
- Upgraded trim package with 7" contemporary baseboard and matching door casings. Front door thresholds finished in marble
- Modern 2-tone kitchen cabinetry with undermount lighting, island and pantry as per plan
- Sleek polished quartz countertop with matching full height quartz backsplash, upgraded undermount sink and designer pull-out faucet
- Premium Energy Star® high efficiency stainless steel appliance package to include GE Monogram or equivalent counter depth refrigerator, dishwasher, built in convection wall oven, gas cooktop with integrated hood vent
- Luxurious heated floors in master ensuite
- Designer mosaic accent tile feature on shower wall and floor